

Western Kentucky University

Department of Communication Sciences & Disorders

Fall 2024

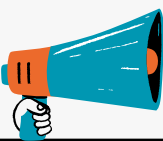
COURSE INFORMATION:

SLP 502-700:

Motor Speech Disorders Syllabus

Thursdays, 6:30 – 8:00 p.m. (EST)

Distance Learning Course



INSTRUCTOR INFORMATION:

Instructor: Rosalyn Davis, PhD., CCC-SLP

Office Location: Virtually Only

Virtual Office Hours: Appointment Only

Email Address: rosalyn.davis@wku.edu



COURSE DESCRIPTION:

Students must be familiar with the etiology, evaluation, and treatment of motor speech disorders affecting adults and children. Students who enter the field of speech-language pathology will benefit from knowledge of the nature and approaches to treating these types of speech disorders.

COURSE MATERIALS:

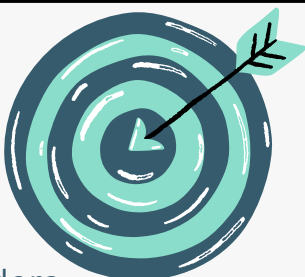
Required Text: Freed, D. (2024). *Motor Speech Disorders, Diagnosis, and Treatment*, 4th ed. (Plural Publishing).

Required Supplemental Readings: Supplemental readings will be made available using the module tab in Blackboard.

COURSE OUTCOMES / LEARNING OBJECTIVES:

By the end of this course, students will be able to:

- **Describe** the neurologic bases of motor speech processes.
- **Identify** etiologies associated with motor speech disorders.
- **Identify** the deviant speech patterns associated with motor speech disorders.
- **Differentially diagnose** dysarthria and apraxia of speech from one another and other kindred communication disorders
- **Select and apply** appropriate assessment tools for individuals with motor speech disorders.
- **Select and apply** appropriate treatment techniques for individuals with motor speech disorders.
- **Identify** elements of interprofessional practice to improve health outcomes and quality of life of individuals with motor speech disorders.



Course Assignments:

In-Class Assignments

25%

Exams

40%

Attendance and Participation

10%

Voice Thread Presentation

25%



A description of each assignment will be made available in Blackboard.





CLASS SCHEDULE:



DATE	TOPIC	READINGS & DUE DATES
8/22	Overview of Neuromuscular Speech Disorders	Read Chapter 1 in the text
8/29	The Motor System	Read Chapter 2 in the text
9/5	Evaluation of Motor Speech Disorders	Read Chapter 3 in the text
9/12	Assessment and Treatment of Flaccid Dysarthria	Read Chapter 4 in the text
9/19	Assessment and Treatment of Spastic Dysarthria	Read Chapter 5 in the text & Exam #1
9/26	Assessment and Treatment of Unilateral Upper Motor Neuron Dysarthria	Read Chapter 6 in the text
10/3	Assessment and Treatment of Ataxic Dysarthria	Read Chapter 7 in the text
10/10	Assessment and Treatment of Hypokinetic Dysarthria	Read Chapter 8 in the text
10/17	Assessment and Treatment of Hyperkinetic Dysarthria	Read Chapter 9 in the text & Exam #2
10/24	Assessment and Treatment of Mixed Dysarthria	Read Chapter 10 in the text
10/31	Assessment and Treat of Pediatric Dysarthria	Supplemental Readings
11/7	Assessment and Treatment of Apraxia of Speech	Read Chapter 11 in the text
11/14	Assessment and Treatment of Childhood Apraxia of Speech	Supplemental Readings & Voice Thread Presentations Due
11/21	Putting it All together	Review Materials
11/28	Thanksgiving Break: No School	Voice Thread Presentation Comments Due
12/5	2024 ASHA Convention: No Class	Final Exam Due



Instructor-Specific Course Policies and Expectations Attendance and Participation:

Attendance and Participation:

You are expected to attend each class, read assigned material/watch videos before class, and participate in class discussions and activities.

You may be called on to answer questions and provide opinions during discussions.



You are responsible for working directly with me if you miss class for any reason, even in a crisis. Excused absences, exceptions, and academic accommodations related to absences rest at my discretion. Your professional responsibility is to obtain copies of notes, handouts, assignments, missed classroom content, etc., from your peers.



Virtual Expectations:

Your video camera must be turned on during sessions, and the audio must be muted when not speaking. If your internet connection becomes poor, you are expected to call into class using the audio from your phone. At a minimum, your first name must be assigned to your profile at each session; no alias names are allowed.

Grading:

The university grading scale will be used:

A = 95-100% A- = 90-94 B+ = 88-89 B = 85-87 B- = 80-84 C+ = 77-79 C = 75-76



Academic Dishonesty:

Academic dishonesty or plagiarism will not be tolerated and will result in a “0” on the assignment for all students involved.

Late Work Policy:

Work submitted late will receive an automatic 5-point reduction each day that it is late from the earned grade.



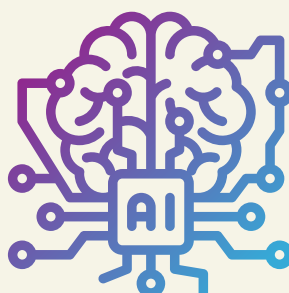
Special Accommodations:

Modifications can be made to these course policies on an individualized basis after consulting with me (e.g., if a student presents a letter of accommodation from the Disability Resource Center.).



Limited or Specific Use of AI Permitted:

Artificial intelligence (AI) tools such as ClickUp and Grammarly may be used for activities such as brainstorming or gathering ideas) with appropriate citations but not for exams or VoiceThread. If you are unsure if you are using AI tools appropriately in this course, I encourage you to visit with me. Examples of how to cite AI tools are available at <https://libguides.wku.edu/stylewrite/ai>.



University Specific Course Policies



ADA Accommodations:

In compliance with University policy, students with disabilities who require academic and/or auxiliary accommodations for this course must contact the Student Accessibility Resource Center located in Downing Student Union, Room 1074. The SARC can be reached by phone number at 270-745-5004 [270-745-3030 TTY] or via email at sarc.connect@wku.edu. Please do not request accommodations directly from the professor or instructor without a faculty notification letter (FNL) from The Student Accessibility Resource Center.

Pregnant and Parenting Students:

Western Kentucky University does not discriminate against any student or exclude any student from its educational programs or activities, including classes or extracurricular activities, on the basis of pregnancy and/or pregnancy-related conditions such as, but not limited to, childbirth, false pregnancy, termination of pregnancy, or recovery therefrom. Students who seek pregnancy or pregnancy-related accommodations should make their requests as soon as possible via WKU's Title IX Website at www.wku.edu/titleix/ under the heading, "Pregnancy or Pregnancy-Related Conditions." Students can also contact the Title IX Coordinator, Ena Demir, via email at ena.demir@wku.edu or by phone at (270) 745-6867 to request accommodations or seek assistance. We encourage students and faculty to work together to establish a plan that allows the student to complete the class and coursework without jeopardizing academic integrity and course standards. The Title IX Coordinator can help facilitate conversations between students and faculty regarding appropriate and reasonable accommodations.

If you are a WKU student and believe that you have experienced an incident(s) of discrimination or harassment based on pregnancy (or pregnancy related conditions or issues), please report it to the Title IX Coordinator via email at ena.demir@wku.edu or by phone at (270) 745-6867.

Additional resources for pregnant and parenting students can be found on WKU's Title IX Website at www.wku.edu/titleix/.

Title IX/ Discrimination & Harassment:

Western Kentucky University (WKU) is committed to supporting faculty, staff and students by upholding WKU's Sex and Gender-Based Discrimination, Harassment, and Retaliation (#0.070) and Discrimination and Harassment Policy (#0.2040). Under these policies, discrimination, harassment and/or sexual misconduct based on sex/gender are prohibited. If you experience an incident of sex/gender-based discrimination, harassment and/or sexual misconduct, you are encouraged to report it to the Executive Director, Office of Institutional Equity/Title IX Coordinator, Ena Demir, 270-745-6867 or Title IX Investigators or Michael Crowe, 270-745-5429. Please note that while you may report an incident of sex/gender based discrimination, harassment and/or sexual misconduct to a faculty member, WKU faculty are "Responsible Employees" of the University and MUST report what you share to WKU's Title IX Coordinator or Title IX Investigator. If you would like to speak with someone who may be able to afford you confidentiality, you may contact WKU's Counseling and Testing Center at 270-745-3159.

[Sexual Assault Resources](#)

Acknowledgment of the Syllabus:

You will need to submit a "Student Acknowledgement of Course Syllabus" statement as an assignment to verify that you read the information in the course syllabus and outlined in Blackboard to indicate you will take the course requirements seriously. There will be no grade assigned to this assignment.